

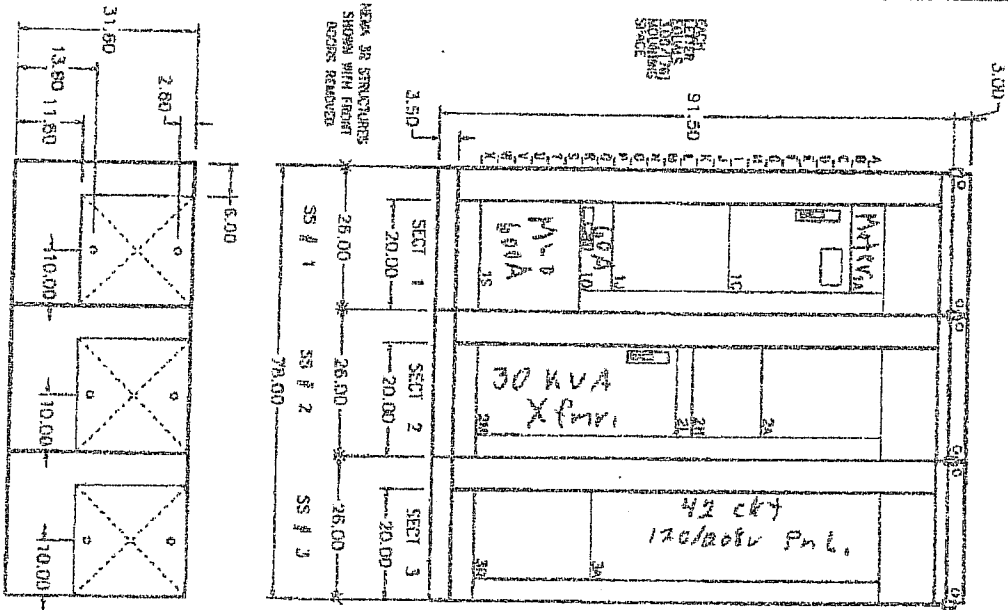
QIC Number: 25075608	Quote Number: 1	Revision Number: 0
Project Name: AUTOMATION PWR. WISC. MCC 3-18-08	Quote Name: AUTOMATION PWR. WISC. MCC 3-18-08	

Item No.	Qty.	Catalog Number / Details
001-00	1	<p>Designation: 600 Amp MCC 480v N-3R Model 6 LVMCC Model 6 MCC - Standard Package</p> <hr/> <p>System Voltage: 480V 3PH 3W 60Hz Max Available Fault Current (RMS) - 65kA Control Power - 120Vac Outdoor Duty Type 3R Enclosure Class 1 Type B Wiring 20" Deep Construction 55kA Bus Withstand Rating 1/4" x 1" Horizontal Ground Bus, Copper 600A Tin Plated Copper Horizontal Bus Standard Exterior Paint ANS1 49 Equipment Mounting Height 72" Manual Vertical Bus Shutters Rodent Barriers Engineered To Order (ETO) 1 - Section(s) with 600A Tin Plated Copper Vertical Bus 2 - Section(s) with 300A Tin Plated Copper Vertical Bus</p> <p>DIMENSIONS AND WEIGHT</p> <hr/> <p>Dimensions: 78.00"W X 31.6"D X 94.5"H Approximate Weight: 3275.00 lbs / 1485.54 kgs</p> <p>INCOMING</p> <hr/> <p>Incoming Connection: Cable</p> <p>MAIN</p> <hr/> <p>Main Lugs Bottom Entry 600A Power Meter PM860 w/ Display</p> <p>FULL VOLTAGE NON-REVERSING STARTERS</p> <hr/> <p>1 - 75 HP NEMA Size 4 FVNR Starter w/Circuit Breaker Electronic Motor Circuit Protector 55kA Interrupting Rating Melting Alloy Overload Relay Control Power Transformer 300VA 22mm XB5 Pilot Devices Hand-Off-Auto Selector Switch Motor On Pilot Light Red 2 NO & 0 NC Auxiliary Electrical Interlocks Motor OFF Pilot Light Green</p> <p>FEEDERS</p> <hr/> <p>1 - Compac 6 Circuit Breaker Branch Feeder 60A 65kA Interrupting Rating</p> <p>DISTRIBUTION TRANSFORMERS</p> <hr/> <p>1 - 30 kVA, 3-Ph Distribution Transformer w/ 208Y/120 Volt Secondary Circuit Breaker Primary Disconnect 65kA Interrupting Rating</p>

QIC Number: 25075608	Quote Number: 1	Revision Number: 0
Project Name: AUTOMATION PWR. WISC. MCC 3-18-08	Quote Name: AUTOMATION PWR. WISC. MCC 3-18-08	

Item No.	Qty.	Catalog Number / Details
		<u>PANELBOARDS</u>
		42 Circuits NQOD Panelboard w/ Main Circuit Breaker 208Y/120V 3Ph 4W 60Hz 1 - Copper Interior 30 - QOB 1 Pole 20A
		<u>MISCELLANEOUS DEVICES</u>
		3 - 21" Prepared Space 1 - 12" Prepared Space 1 - 3" Prepared Space

002-00	1	MA1000R ENCLOSURE FOR CIRCUIT BREAKER NEMA 3R
003-00	1	MHL36600 MOLDED CASE CIRCUIT BREAKER 600V 600A



GENERAL NOTES

Class 1 Type B Wiring

PRODUCT DESCRIPTION AND RATINGS

POWER SYSTEM DATA

- 480V 3PH 3W 60Hz
- SHORT CIRCUIT RATING: 65kA
- POWER ENTERS: Main Lvg Bottom Section 1
- CONTROL POWER: 120Vdc

BUS SYSTEM DATA

- MAIN HORIZONTAL BUS: 600 Amp Copper/Tin Plated / 1.5"
- BUS BRACING: 65kA
- VERTICAL BUS: 300 Amp Tin Plated Copper
- HORIZONTAL GROUND BUS: .25" X 1.0" (3.5mm X 25.4mm) Copper
- Units Securely Grounded To Structure

ENCLOSURE DATA

- ENCLOSURE TYPE: 20" DEEP Type 3R
- EXTERIOR COLOR: Electrodeposition Finish ANSI 49 Medium Light Grey
- INTERIOR COLOR: Electrodeposition Finish ANSI 49 Medium Light Grey

STRUCTURE HARDWARE

- Rodent Barriers 1
- Manual Bus Shutters 1, 2, 3
- 60kA Vertical Bus 1

WEIGHTS

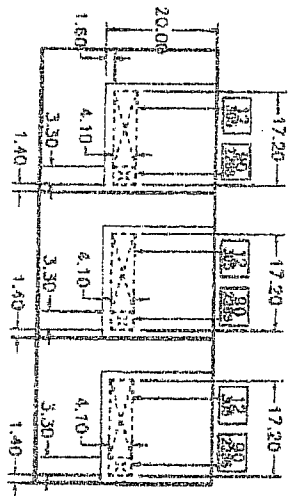
- SHIPPING SPLIT # 1: 1050.00 Lbs. (476.28 Kg)
- SHIPPING SPLIT # 2: 1175.00 Lbs. (532.98 Kg)
- SHIPPING SPLIT # 3: 1050.00 Lbs. (476.28 Kg)
- TOTAL LINEUP WEIGHT (APPROX): 3275.00 Lbs. (1489.54 Kg)

WEIGHT ASSUMPTIONS

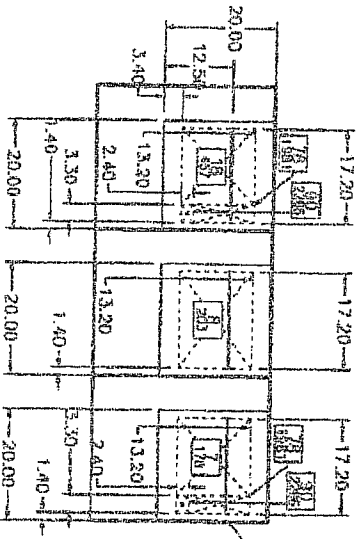
See Unit Features

EMERSON DIMENSIONS, INCHES

JOB NO.	APPROVED BY	DATE	EMERSON APPROVED FOR AND BY
100-100000	INSON V	March 11, 2005	EMERSON APPROVED FOR AND BY
REV. 01	(12)		EMERSON APPROVED FOR AND BY
DATE	APPROVED BY	DATE	EMERSON APPROVED FOR AND BY
March 11, 2005			
REVISION	DESCRIPTION	DATE	BY
1	Standard Erection	03/11/05	100-100000



TOP VIEW

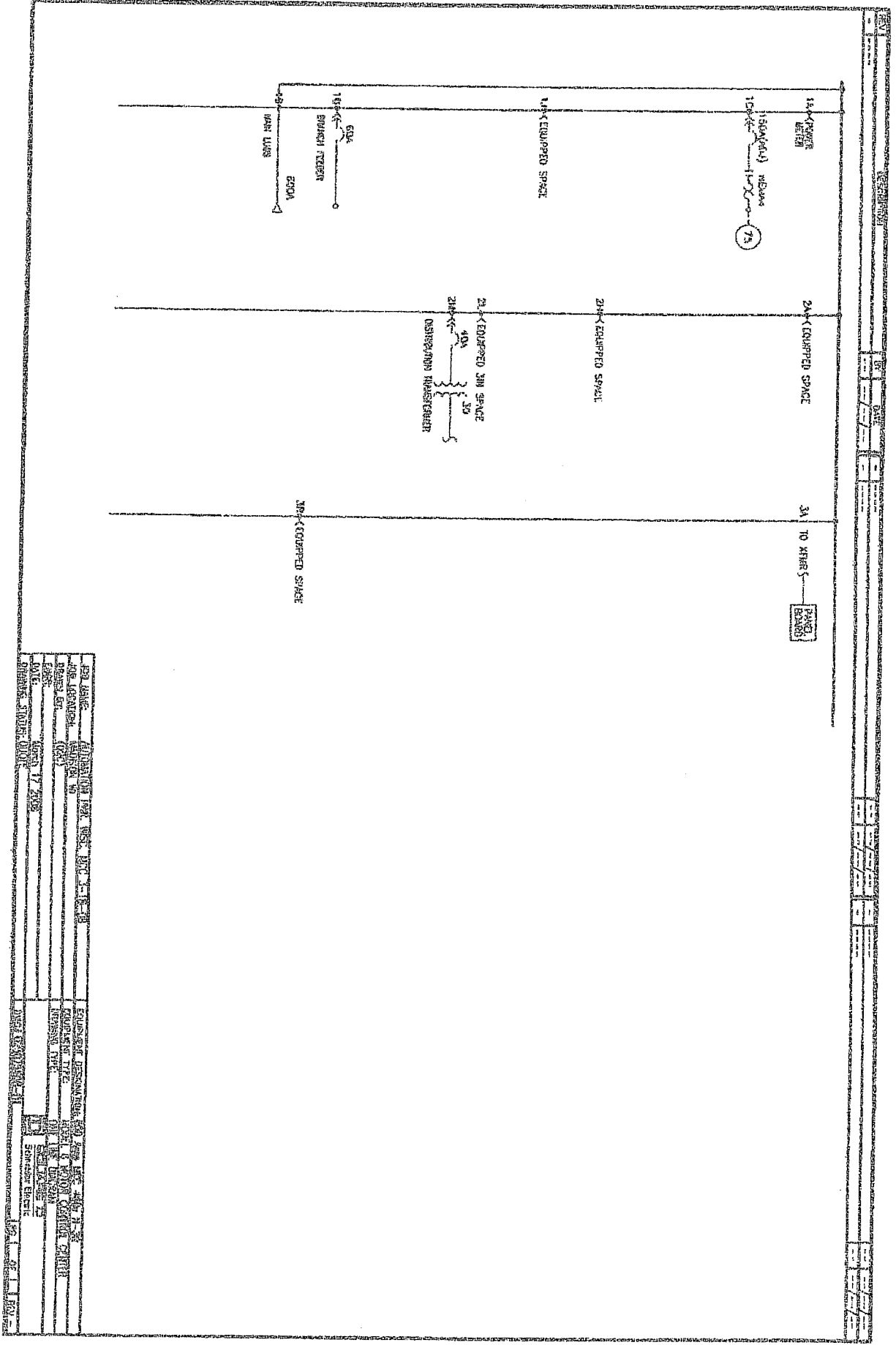


FLOOR VIEW

DRESSED AREA REPRESENTS CONDUIT ENTRY
AREA NUMBERS IN SQUARES INDICATE VENTILATION
CLEARANCE TO NEAREST OBSTRUCTION

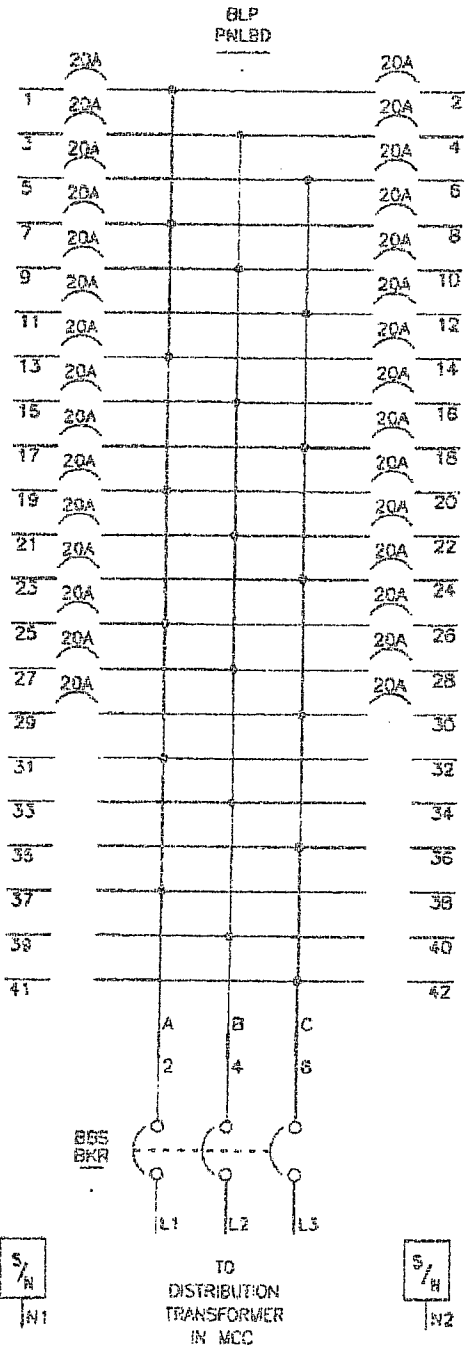
JOB NO.	17-17-20	EQUIPMENT PROVIDED BY AND FOR	BY
DATE	17-17-20	CONTRACT NO.	
DRWING NO.	17-17-20	REVISION NO.	
		DATE	
		BY	
		DATE	

ENGLISH DIMENSIONS IN INCHES



NO.	DESCRIPTION	QUANTITY	UNIT	REMARKS
1	EQUIPPED SPACE	3	SQ. FT.	
2	150V (60 Hz) WIRING			
3	GAS			
4	BRANCH CIRCUIT			
5	WATER LINE			
6	FLOOR FINISH			

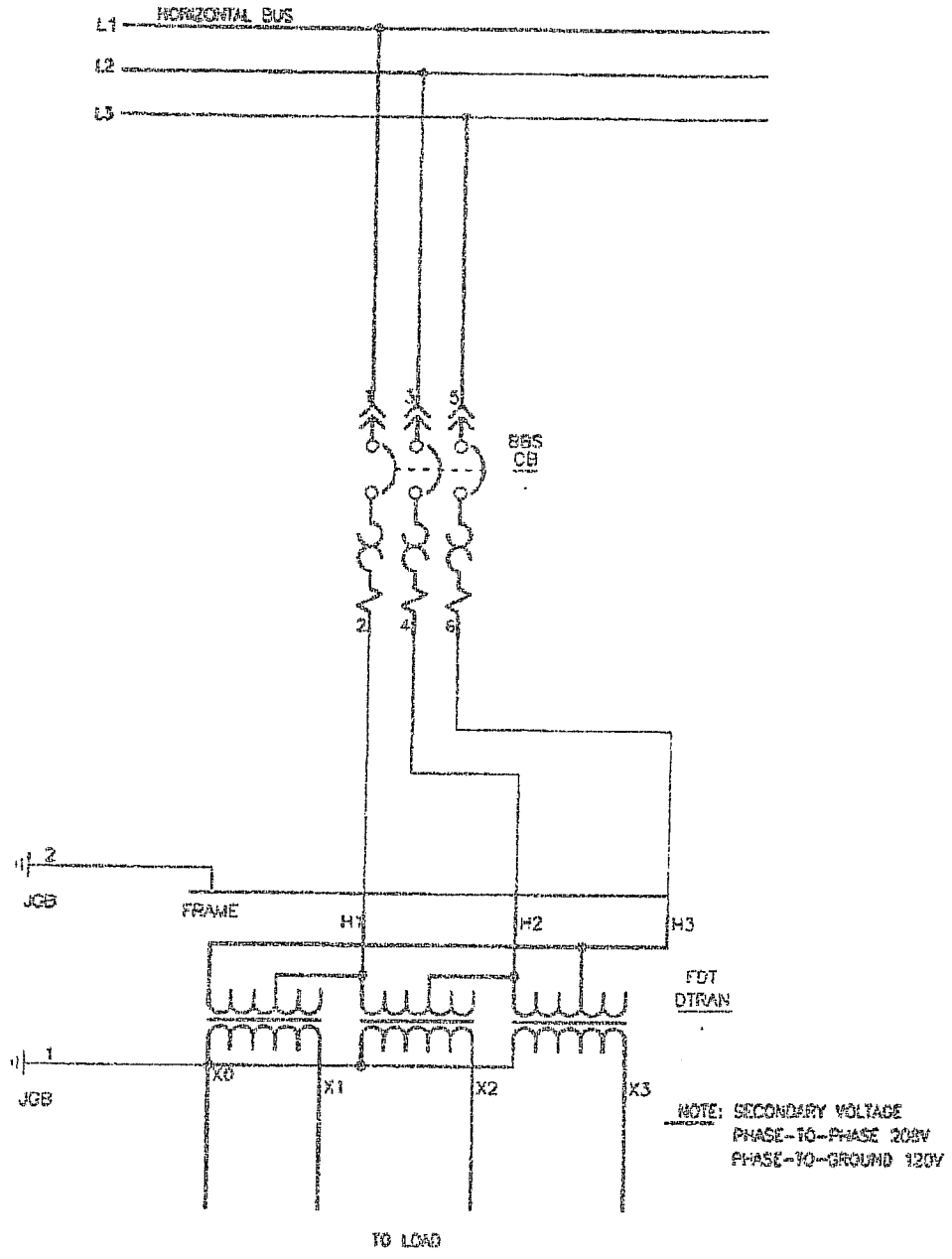
REV	DESCRIPTION	BY	DATE				
-	-	-	-	-	-	-	-



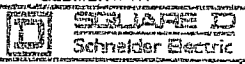
DRAWING IS NOT COMPLETE AND IS FOR QUOTATION PURPOSES ONLY.

JOB NAME:	AUTOMATION PWR. WISC. MCC 3-18-08	EQUIPMENT DESIGNATION:	600 Amp MCC 480v N-3R
JOB LOCATION:	MADISON WI	EQUIPMENT TYPE:	MODEL 6 MOTOR CONTROL CENTER
DRAWN BY:	(Q2C)	DRAWING TYPE:	ELEMENTARY
ENGR:			
DATE:	March 17 2008	DWG/	E25075608-05
DRAWING STATUS:	QUOTE	PG 1	OF 1 (REV -

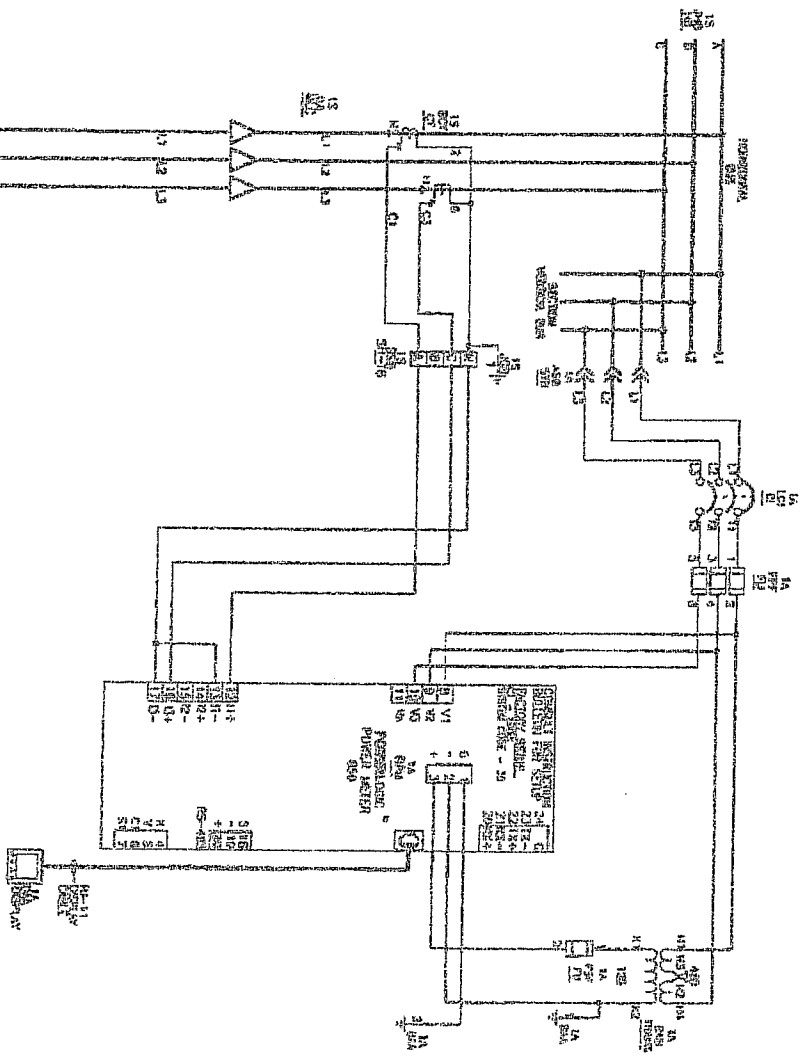
REV	DESCRIPTION	BY	DATE				
-	-	-	-	-	-	-	-



JOB NAME:	AUTOMATION PWR. WISC. MCC 3-18-08	EQUIPMENT DESIGNATION:	600 Amp MCC 480v N-3R
JOB LOCATION:	MADISON WI	EQUIPMENT TYPE:	MODEL 6 MOTOR CONTROL CENTER
DRAWN BY:	(JZC)	DRAWING TYPE:	ELEMENTARY
ENCR:			
DATE:	March 17 2008		
DRAWING STATUS:	QUOTE	DWG# E25073608-04	PG 1 OF 1 REV -

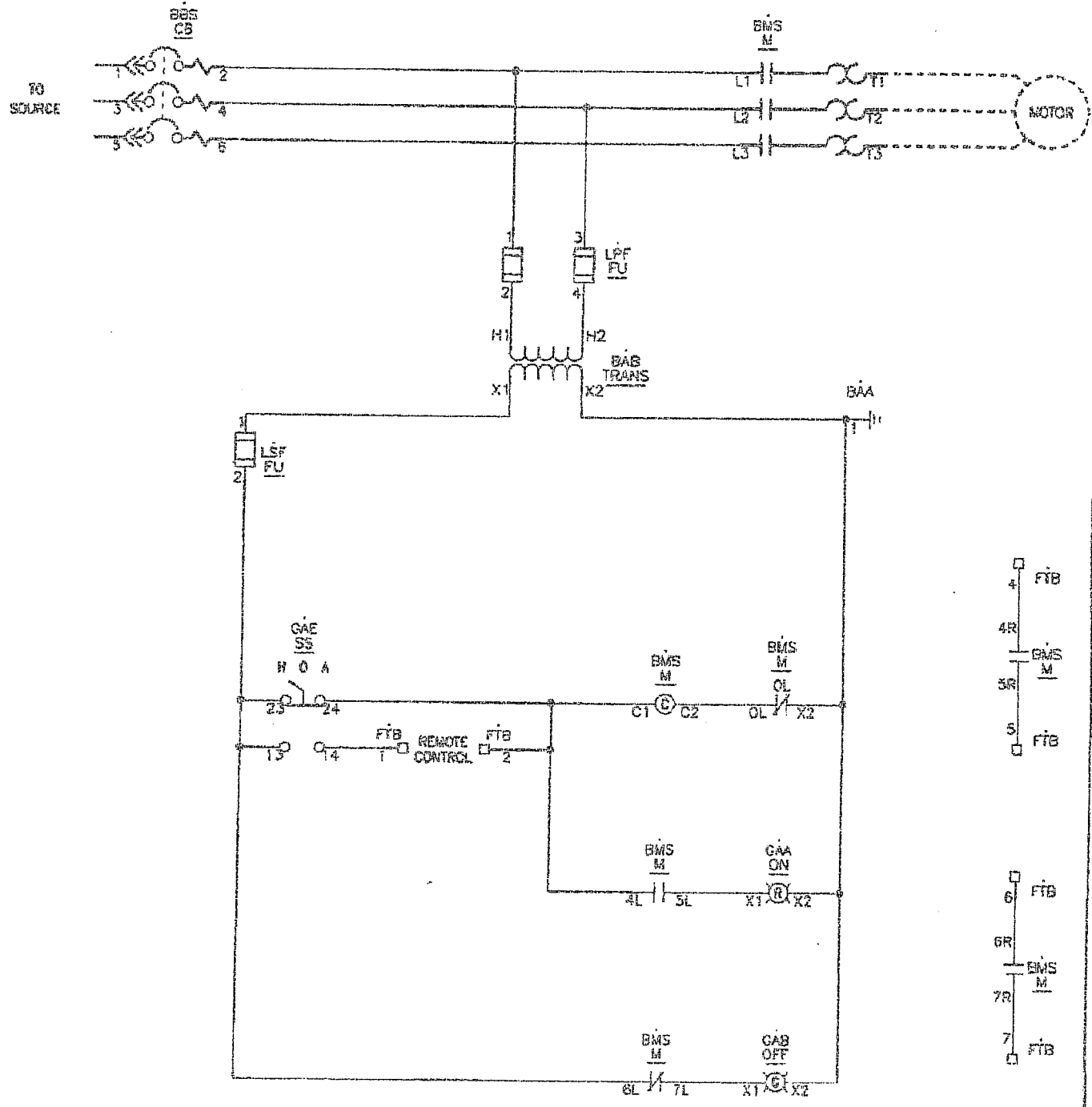


REINSTALLER NOTE:
 THIS UNIT IS DESIGNED IN A SEPARATE STOPPED STATE WITH
 THE MAIN DRIVE AND MOTOR STOPPED. THE MAIN DRIVE UNIT
 AND THE STOPPED STATE UNIT ARE NOT TO BE REINSTALLED
 UNTIL THE STOPPED STATE UNIT IS REINSTALLED AND THE
 MOTOR IS REINSTALLED. THE STOPPED STATE UNIT IS
 DESIGNED AT THE MAIN DRIVE STOPPED STATE.



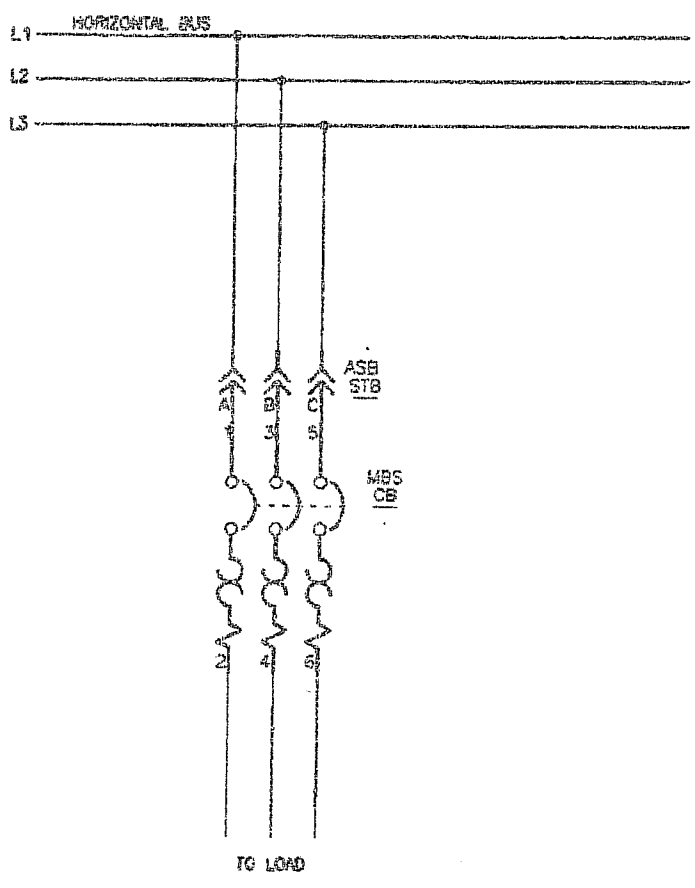
NO. 1	STOPPED STATE MOTOR	1/2 HP
NO. 2	MAIN DRIVE MOTOR	1/2 HP
NO. 3	RESISTOR	1/2 HP
NO. 4	PUMP MOTOR	1/2 HP
NO. 5	STOPPED STATE MOTOR	1/2 HP
NO. 6	MAIN DRIVE MOTOR	1/2 HP
NO. 7	RESISTOR	1/2 HP
NO. 8	PUMP MOTOR	1/2 HP
NO. 9	STOPPED STATE MOTOR	1/2 HP
NO. 10	MAIN DRIVE MOTOR	1/2 HP
NO. 11	RESISTOR	1/2 HP
NO. 12	PUMP MOTOR	1/2 HP
NO. 13	STOPPED STATE MOTOR	1/2 HP
NO. 14	MAIN DRIVE MOTOR	1/2 HP
NO. 15	RESISTOR	1/2 HP
NO. 16	PUMP MOTOR	1/2 HP
NO. 17	STOPPED STATE MOTOR	1/2 HP
NO. 18	MAIN DRIVE MOTOR	1/2 HP
NO. 19	RESISTOR	1/2 HP
NO. 20	PUMP MOTOR	1/2 HP


REV	DESCRIPTION	BY	DATE				



JOB NAME:	AUTOMATION PWR. WISC. MCC 3-1B-0B	EQUIPMENT DESIGNATION:	600 Amp MCC 480v N-3R
JOB LOCATION:	MADISON WI	EQUIPMENT TYPE:	MODEL 6 MOTOR CONTROL CENTER
DRAWN BY:	(02C)	DRAWING TYPE:	ELEMENTARY
ENGR:		 Schneider Electric	
DATE:	March 17 2008		
DRAWING STATUS:	QUOTE	DWG#	E25075605-01

REV	DESCRIPTION	BY	DATE			
--	---	--	---/---/---	--	---	---



JOB NAME:	AUTOMATION PWR. WISC. MCC 3-18-08	EQUIPMENT DESIGNATION:	600 Amp MCC 480v N-SR
JOB LOCATION:	MADISON WI	EQUIPMENT TYPE:	MODEL 6 MOTOR CONTROL CENTER
DRAWN BY:	(QZC)	DRAWING TYPE:	ELEMENTARY
ENGR:			SCALE: 1
DATE:	March 17 2008		Schneider Electric
DRAWING STATUS:	QUOTE	DWG# E25075608-02	PG OF REV -